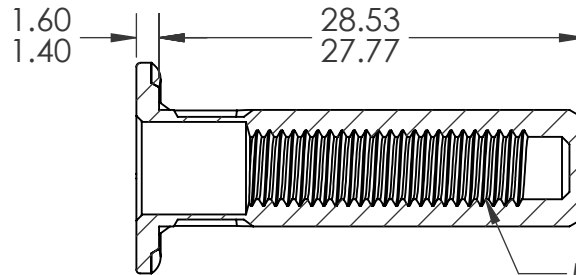
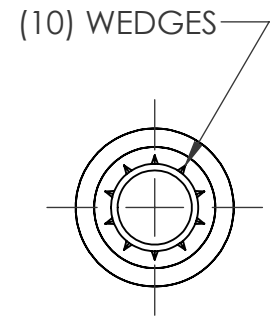
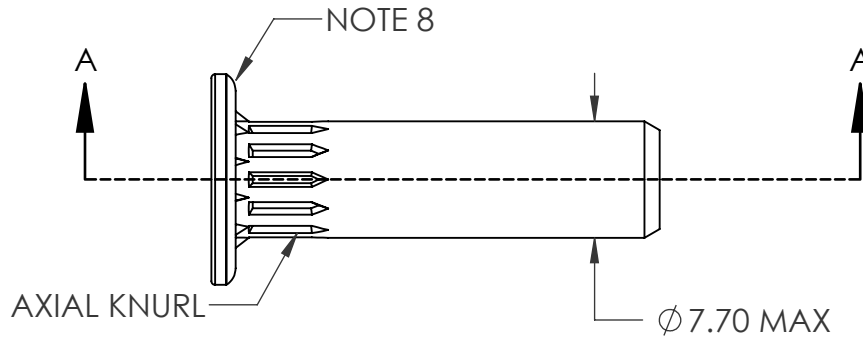
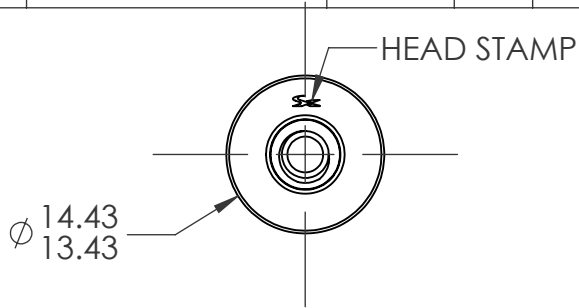


REVISIONS				
REV.	DESCRIPTION	DATE	ECN	INITIAL
A	INITIAL RELEASE	03/05/21	3794	FCG
B	UPDATE BODY DIAMETER	09/07/22	4105	MRA



M5x0.8 6H
PER ASME B1.13M
MINOR DIA.: 4.13 - 4.33

SECTION A-A

NOTE:

- GRIP RANGE: 1.5 - 3.0
- HOLE SIZE: 7.60 +0.15/-0.00 AFTER ALL APPLIED FINISHES.
- INSTALLED LENGTH: 24.15 MAX.
- INSTALLED THREAD DEPTH: 20.0 MIN. IN MIN. GRIP
- LUBRICATION: NONE
- INSTALLATION TOOL: SPIN-PULL
- THREADS MEET CLASS 8 PROOF LOAD: 12.14 KN PER ISO 898-2
- DEPOSIT PLASTISOL ALONG OUTER GROOVE OF THE HEAD. SEAL MUST NOT CONTACT WEDGES.

PROPRIETARY AND CONFIDENTIAL

THIS DRAWING, AND THE INFORMATION CONTAINED HEREIN, ARE THE PROPERTY OF SHEREX AND ARE NOT TO BE USED IN ANY MANNER DETRIMENTAL TO THE INTEREST OF THE COMPANY.
SHEREX SOLUTIONS RESERVES THE RIGHT TO REVISE PART/DRAWING WITHOUT NOTICE.

		UNLESS OTHERWISE SPECIFIED:		NAME	DATE
		DIMENSIONS ARE IN MILLIMETERS TOLERANCES: ANGULAR: MACH ± 1 BEND ± 1 ONE PLACE DECIMAL ± .3 TWO PLACE DECIMAL ± .08	DRAWN	FCG	03/05/21
		INTERPRET GEOMETRIC TOLERANCING PER: ASME Y14.5M-1994	CHECKED		
		MATERIAL	ENG APPR.	CL	03/05/21
		C1008/C1010	MFG APPR.		
		FINISH	Q.A.		
		ZINC PLATE CLEAR TRIVALENT CHROMATE PER SFS-01-001, SC1	COMMENTS:		
NEXT ASSY	USED ON		E-mail: info@sherex.com www.sherex.com Phone: 866-474-3739 Fax: 716-875-0358		
APPLICATION		DO NOT SCALE DRAWING			



TITLE:

M5X0.8 LARGE FLANGE
CLOSED END OPTISERT W/ SEAL

SIZE DWG. NO.

A OPT2-580-3.0BS

REV

B

SCALE: 2:1 WEIGHT:

SHEET 1 OF 1